



☆☆☆
STANDARD



Angled IEC Jack

This angled SCHWAIGER® IEC jack is used to connect a connection cable to an antenna socket. Thanks to the angled jack, the cable does not break upon bending and remains shielded in the best way possible. The inner

conductors are pluggable. This angled jack allows for optimum cable TV transmission.



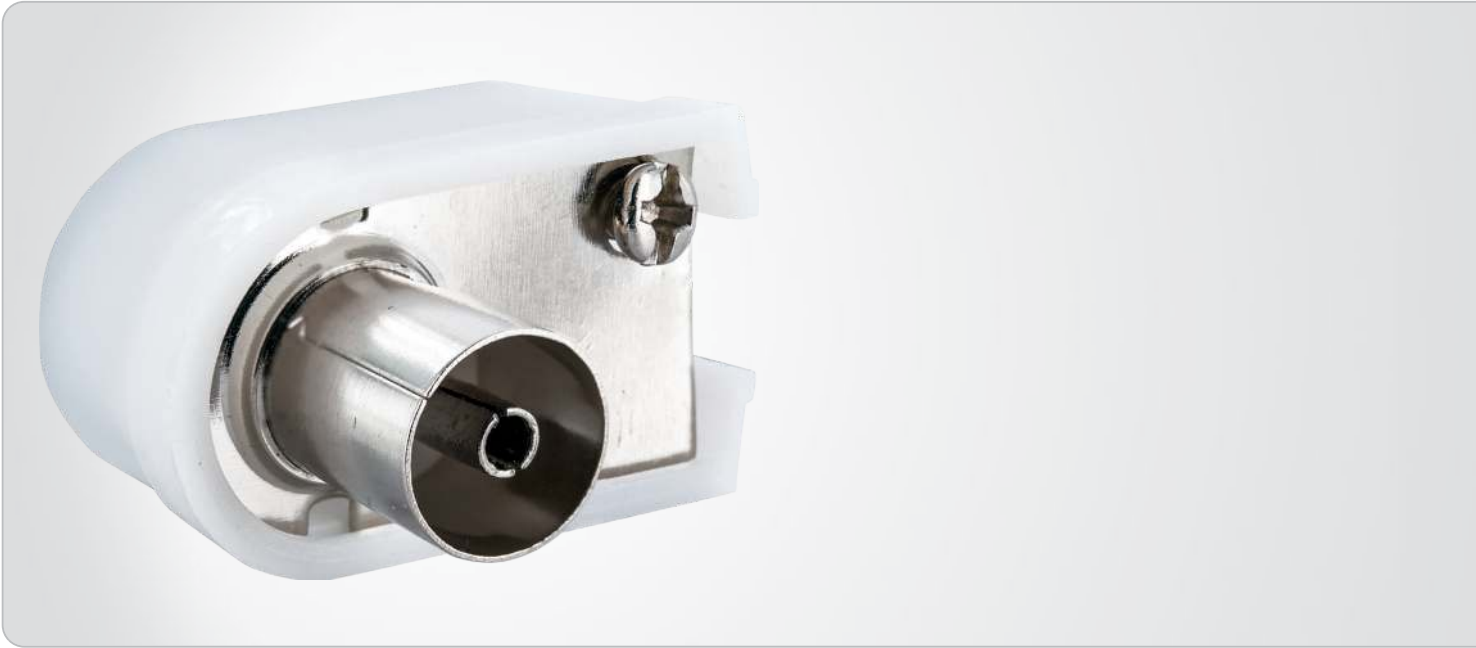
ARTICLE INFORMATION

Article Nr
EAN

WST20 532
4004005504903



Last updated: 23.03.2016



FEATURES (WST20 532)

- for connecting TVs and antenna amplifiers to an antenna socket
- 90° angled jack shortens long cable bendings and prevents cables from breaking
- screwable inner conductor

TECHNICAL DATA

| | |
|-------------------|--|
| quality | * Standard |
| Connections | 1x angled IEC jack |
| Diameter | 0.5 - 1.1 mm (inner conductor) 4 - 7.5 mm (cable) |
| Content (package) | 1 |

| | |
|---------------------|-----------------------|
| Material of product | metal plastic |
| Colour | white |
| packaging | sliding blister SBL1S |