



Angled IEC Jack

Export Version

This angled SCHWAIGER® IEC jack is used to connect a connection cable to an antenna socket. Thanks to the angled jack, the cable does not break upon bending and remains shielded in the best way possible. The inner

conductors are pluggable. This angled jack allows for optimum cable TV transmission.



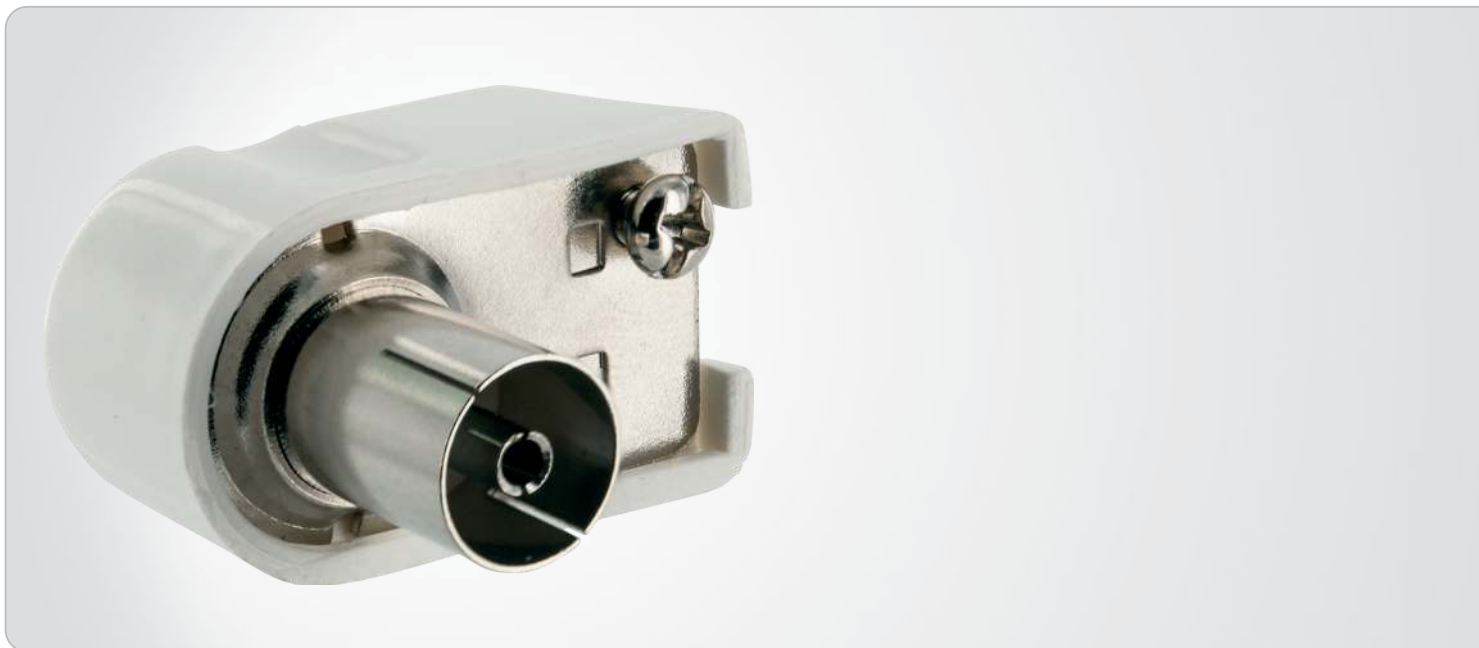
ARTICLE INFORMATION

Article Nr
EAN

WST06 102
4004005106022



Last updated: 23.03.2016



FEATURES (WST06 102)

- for connecting TVs and antenna amplifiers to an antenna socket
- 90° angled connector shortens too long cable bendings and prevents the cable from breaking
- screwable inner conductor

TECHNICAL DATA

Connections	1x angled IEC jack
Diameter	0.5 - 1.1 mm (inner conductor) 4 - 7.5 mm (cable)
Content (package)	1

Material of product	metal plastic
Colour	white
packaging	polybag

Last updated: 23.03.2016