

★★★
PROFESSIONAL



Mast Base

with earthing clamp and 2 wood screws

This SCHWAIGER® mast base fixates the antenna mast at any place desired, e.g. on a beam or on the floor. For installation on sturdy and suitable surfaces only!



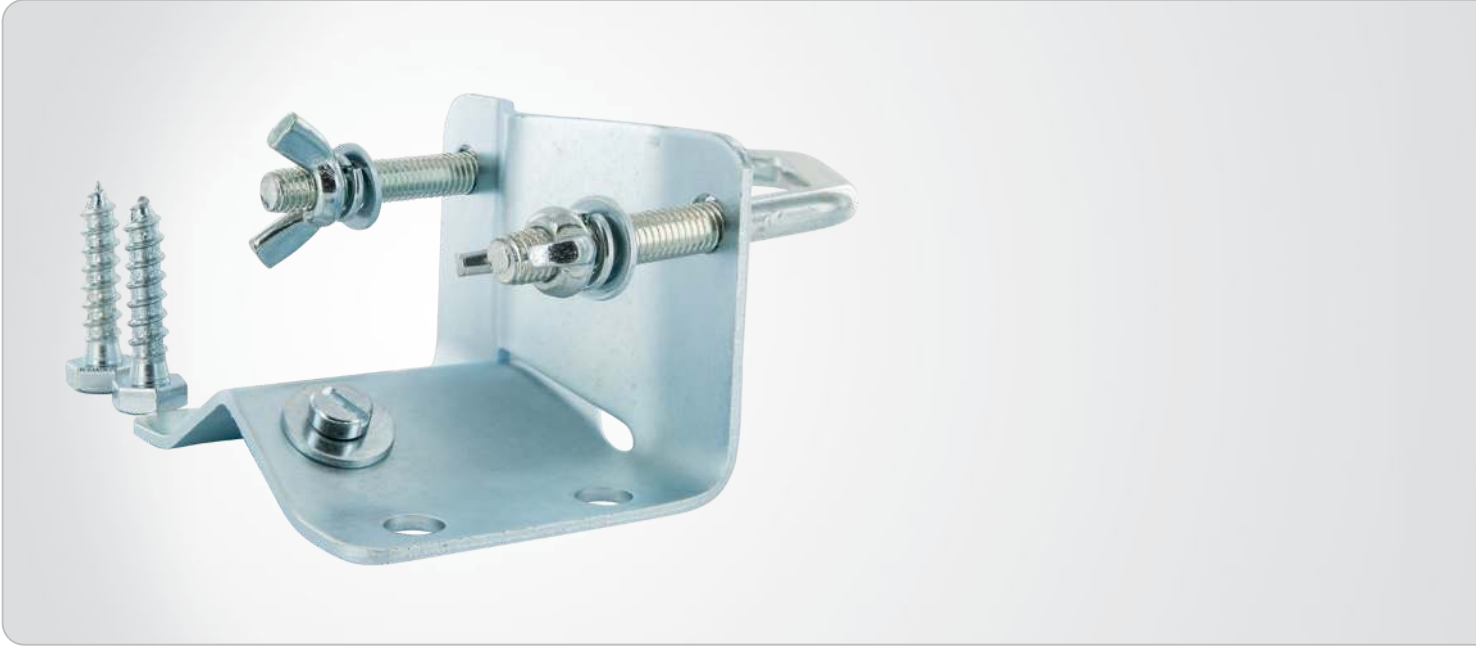
ARTICLE INFORMATION

Article Nr
EAN

MAF45 541
4004005252873



Last updated: 23.03.2016



FEATURES (MAF45 541)

- for pipes with an outer diameter of up to 60 mm
- with earthing clamp and 2 wood screws

TECHNICAL DATA

quality	** Professional	Dimensions (height)	45 mm
Material of product	iron chromated	Dimensions (depth)	70 mm
Dimensions (width)	10 mm	packaging	header card

Last updated: 23.03.2016